



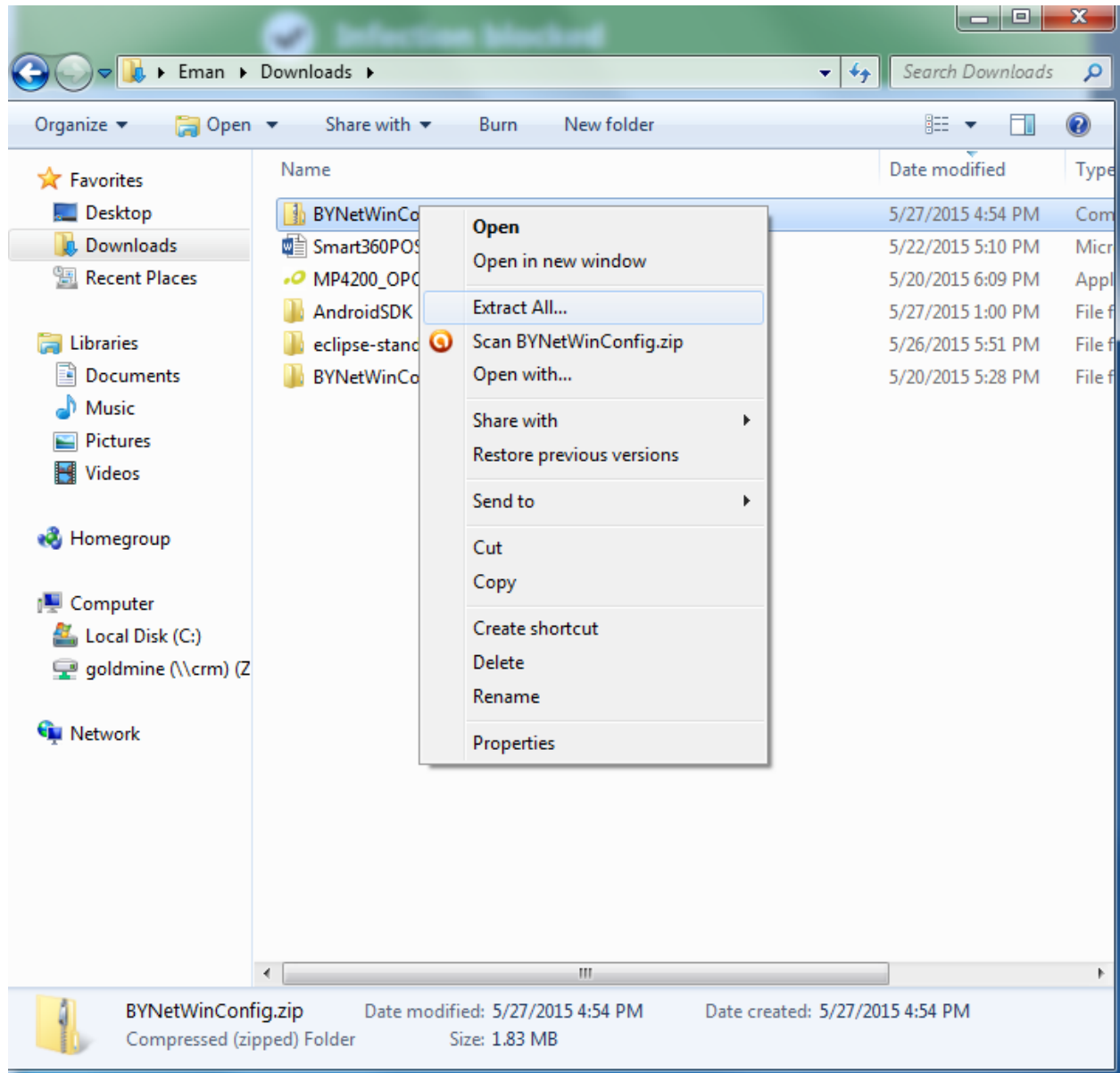
Installing the SNBC BTP-R180II On Smart360 POS

*** To configure this printer for your Smart360 POS, you will need Windows computer ***

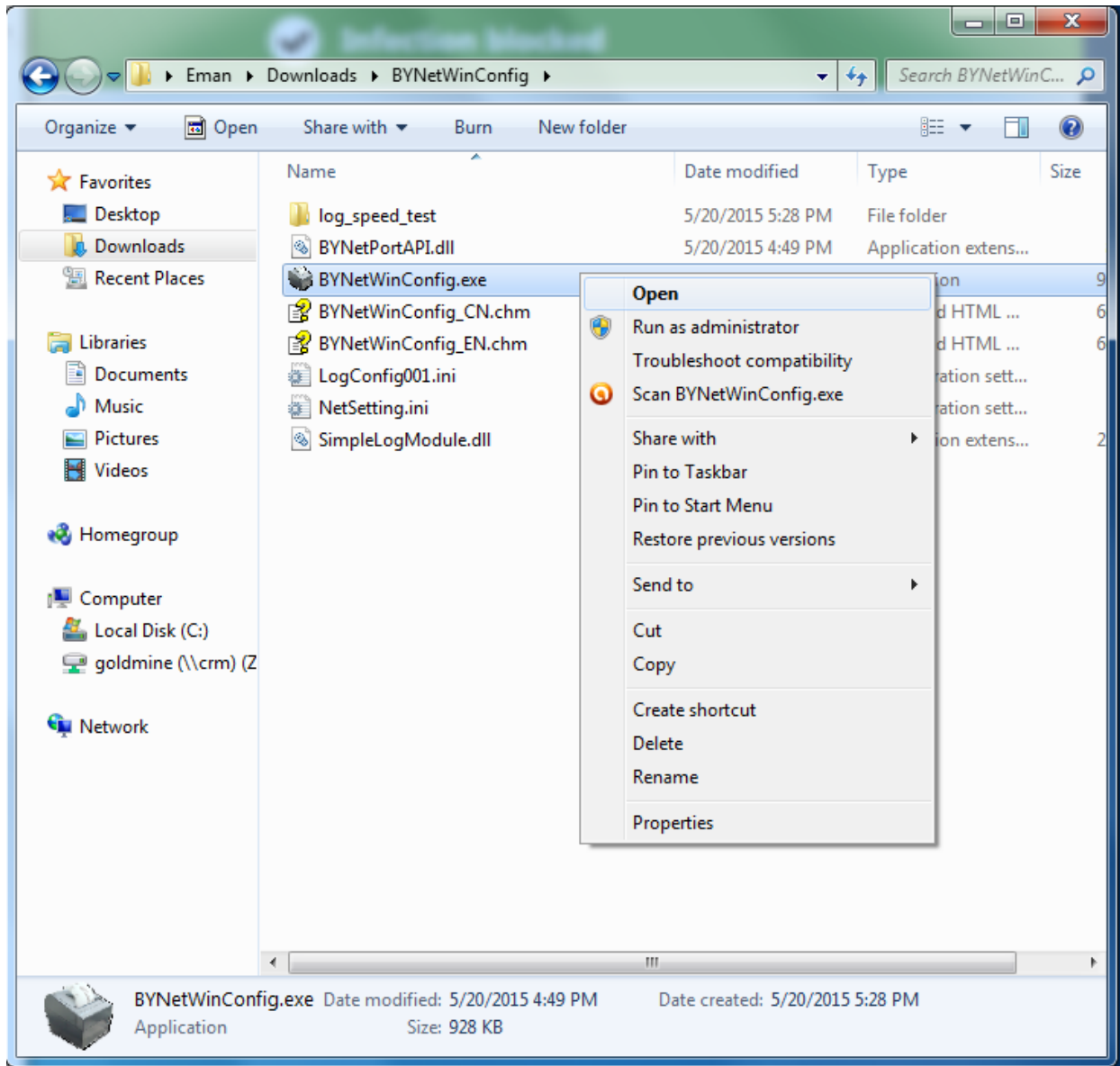
1. Download ByNetWinConfig Tool

- http://smart360pos.com/sirclereg/Smart360POSdownloads/BYNetWinConfigV3_10.zip

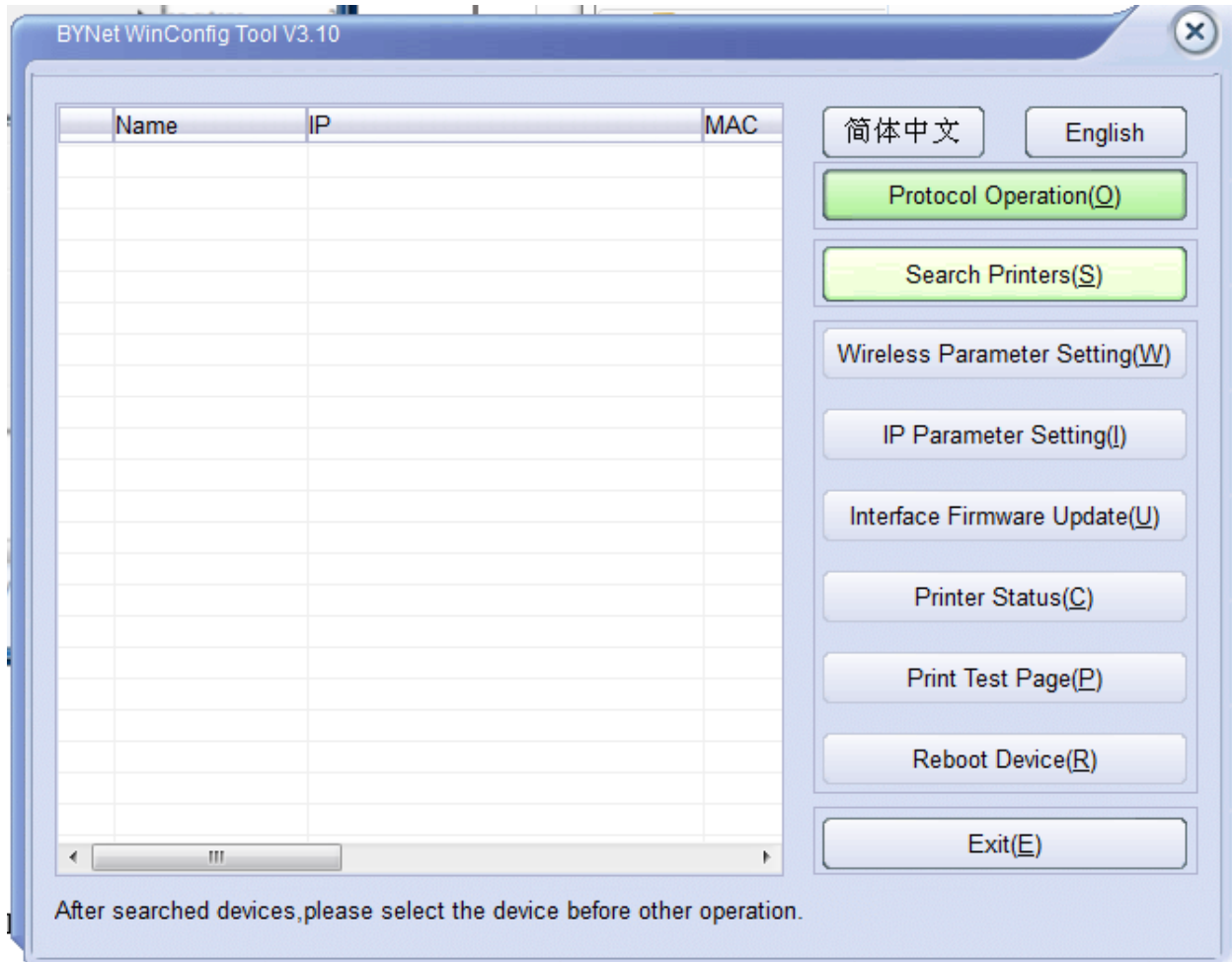
2. Extract the contents of the zip file



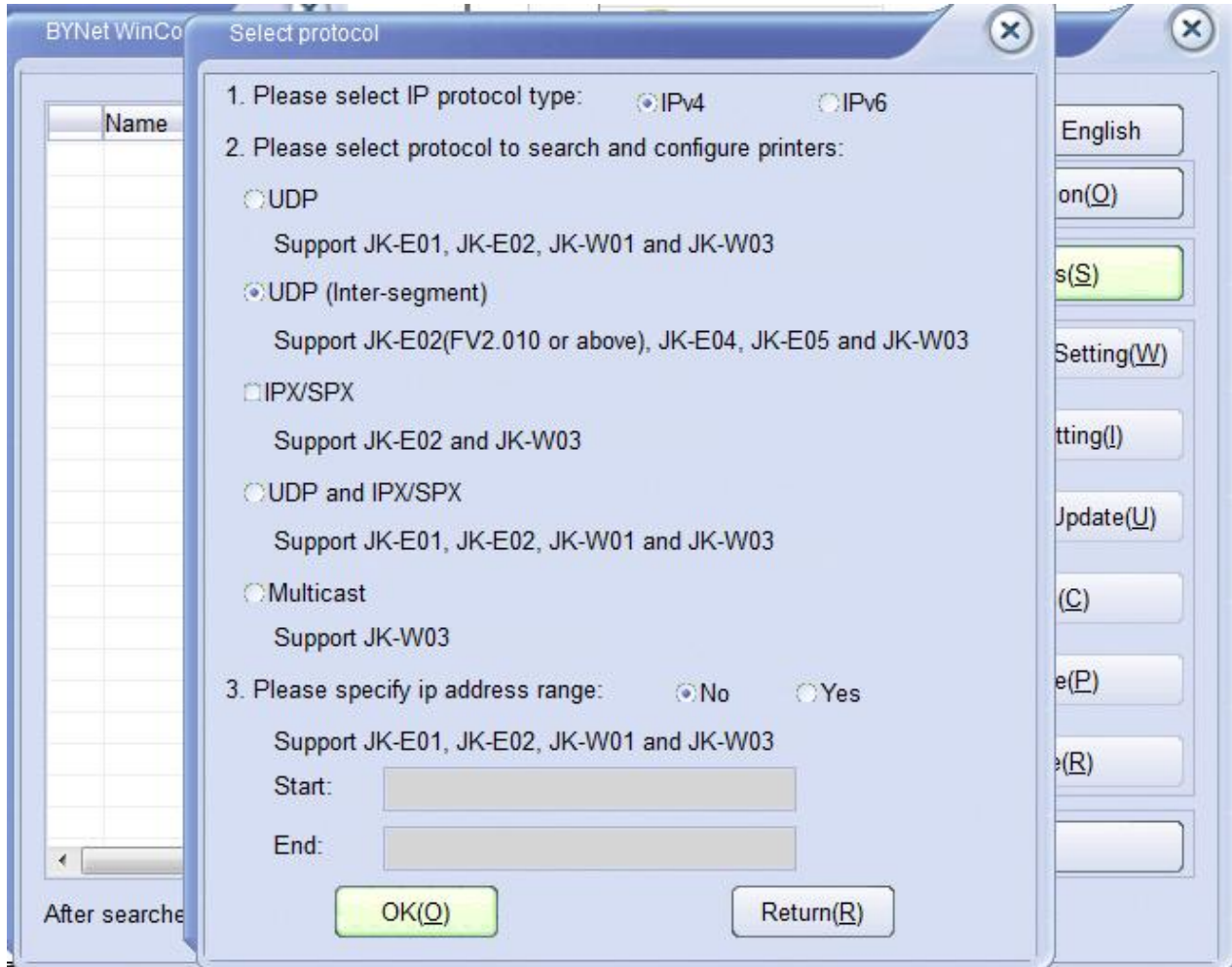
3. Once extracted, go into the folder and run the BYNetWinconfig.exe



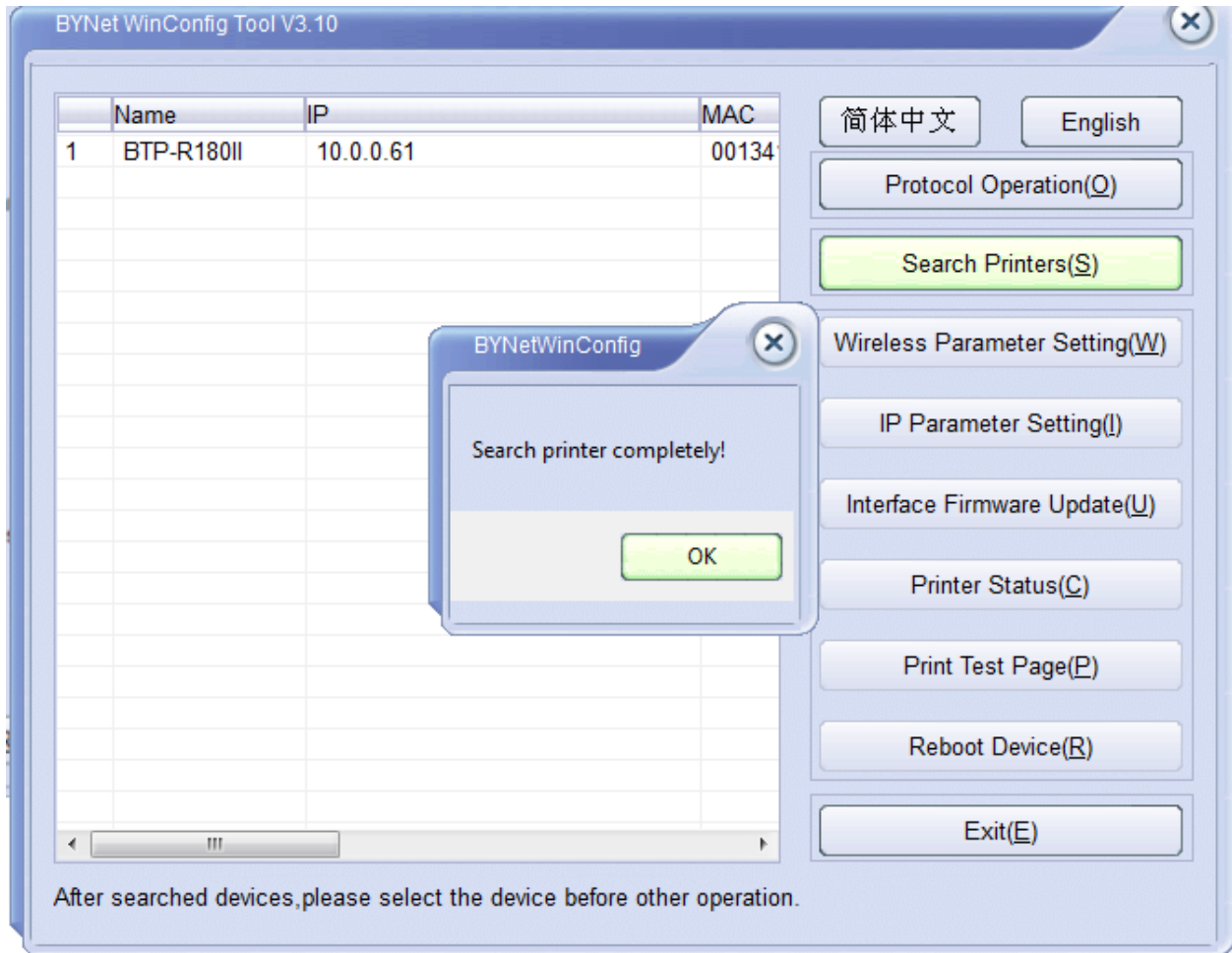
4. Open Protocol Operation(O)



5. Make sure IPv4 and UDP (Inter-segment) are selected then click OK

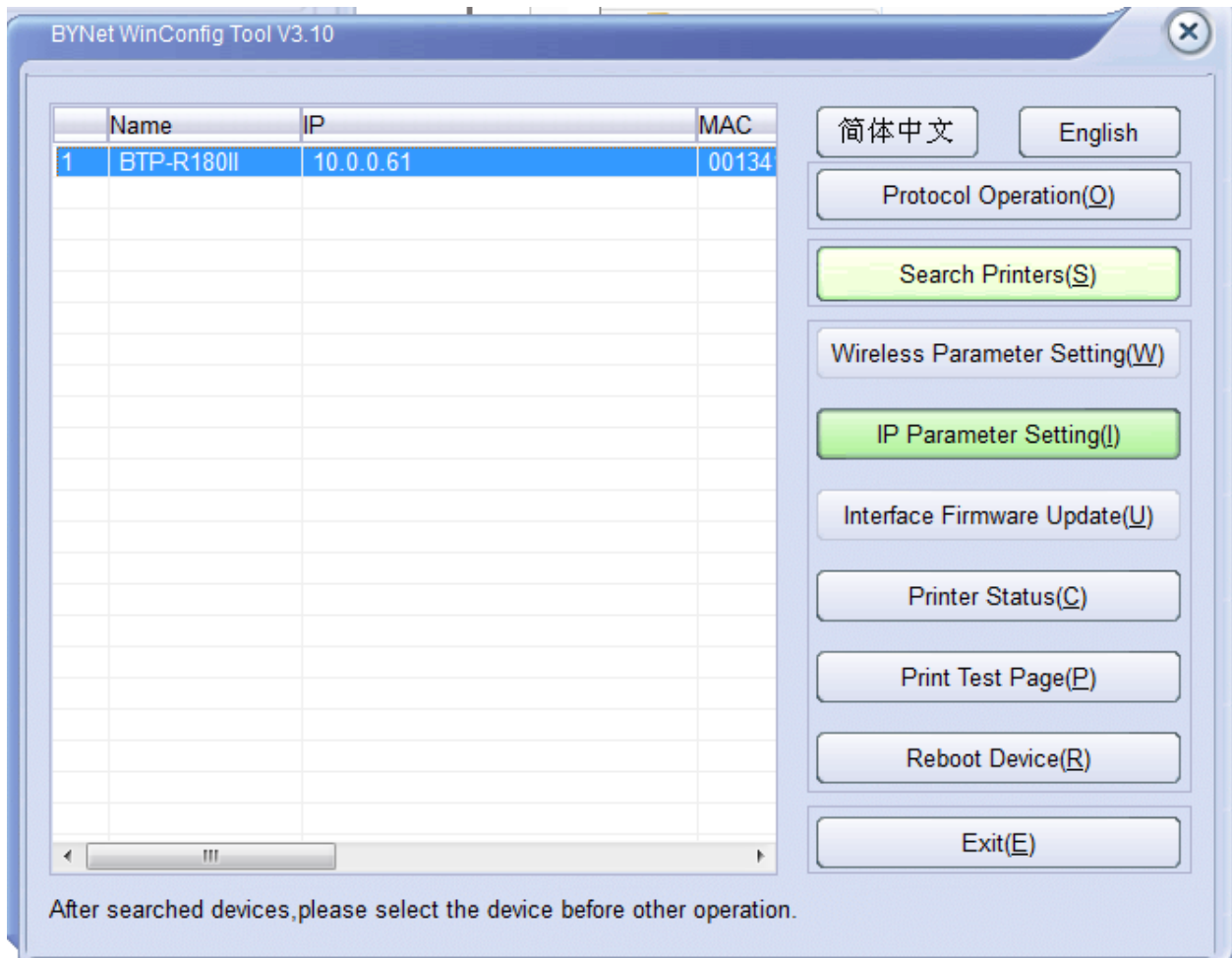


6. Now click Search Printers. The printer will show up to the left. Click OK.

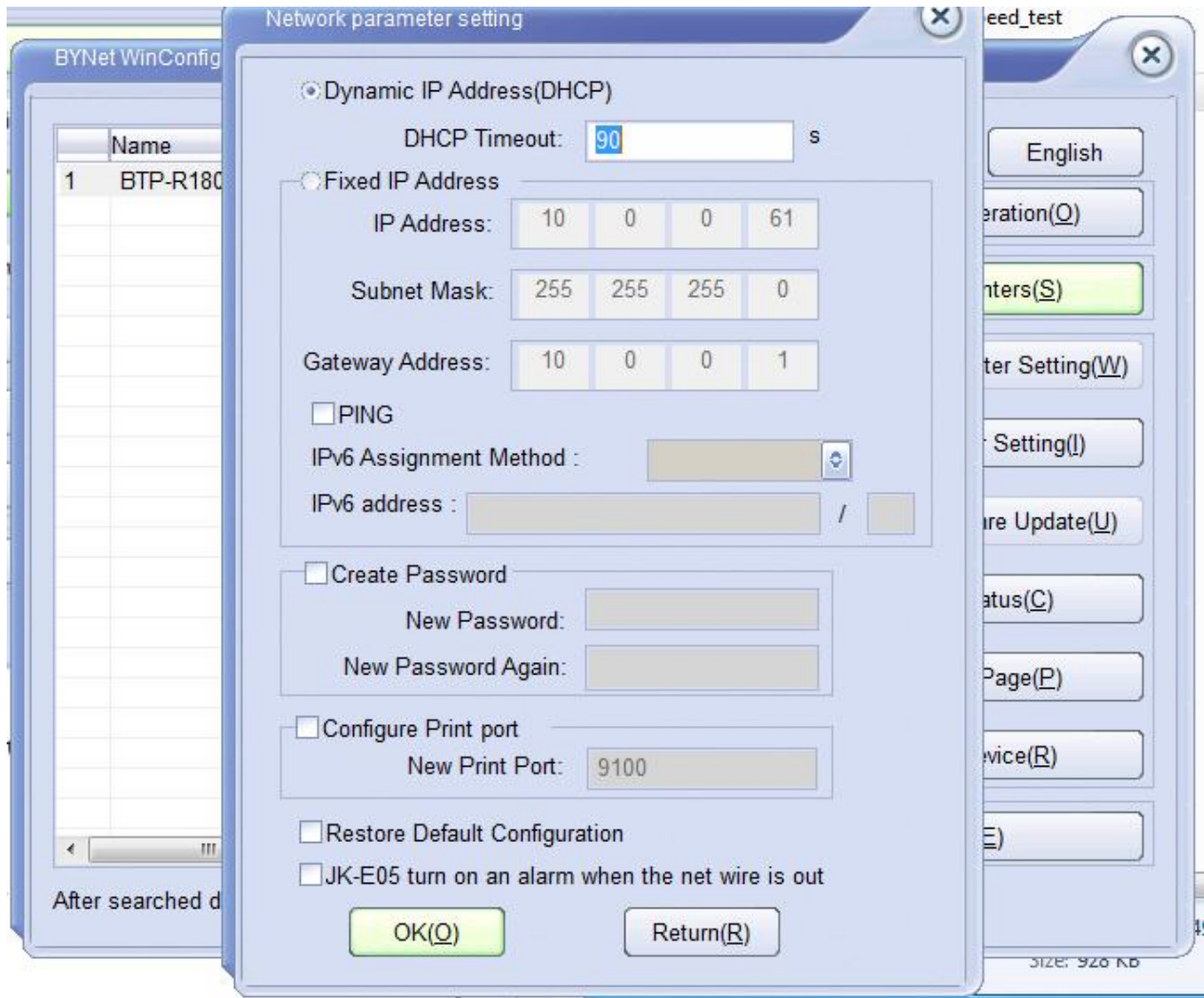


**THE PRINTER WILL INITIALLY HAVE AN IP ADDRESS WHICH DOES NOT MATCHES YOUR NETWORK
NEXT FEW STEPS WE WILL FIX THIS**

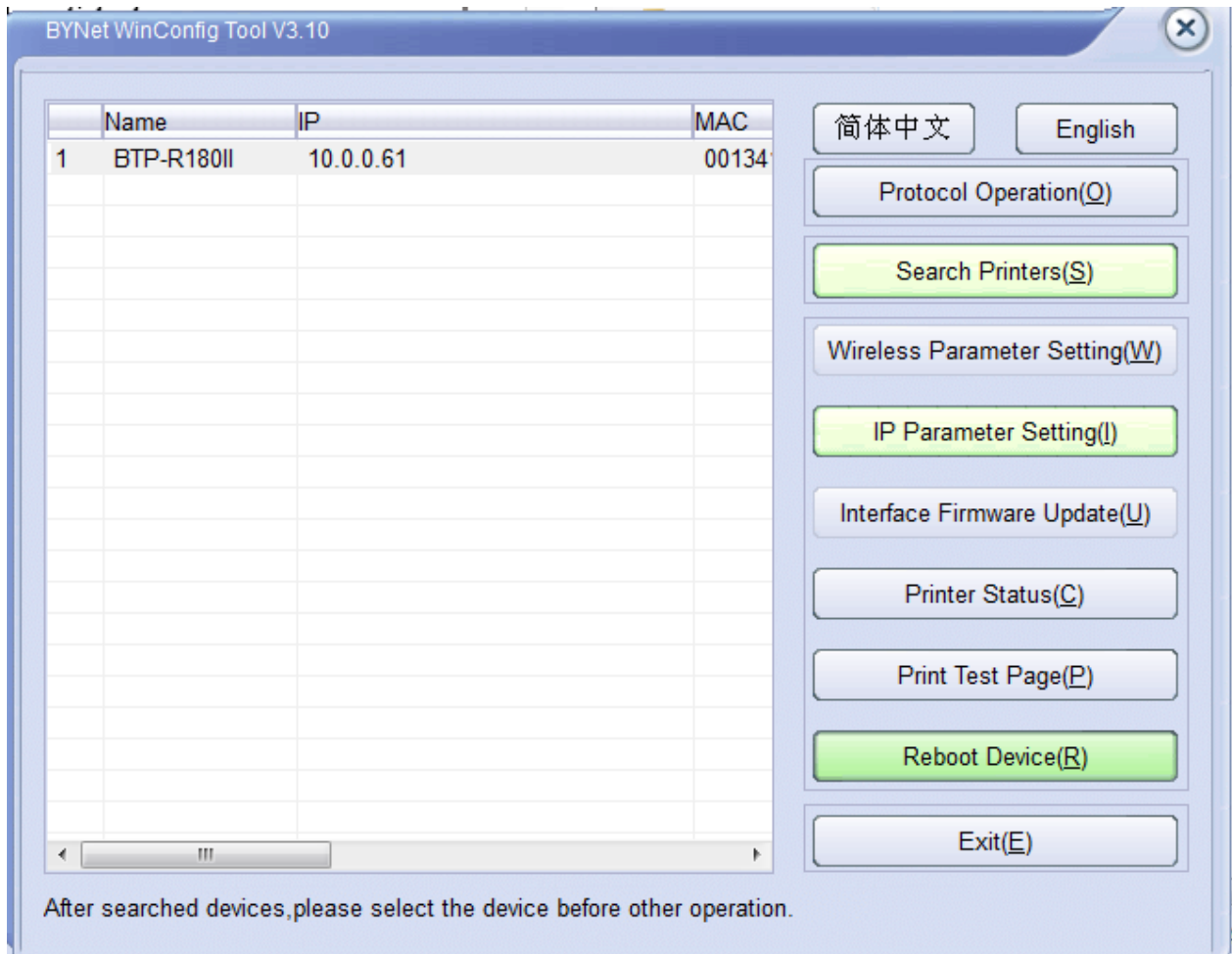
7. Select the printer and then click IP Parameter Setting



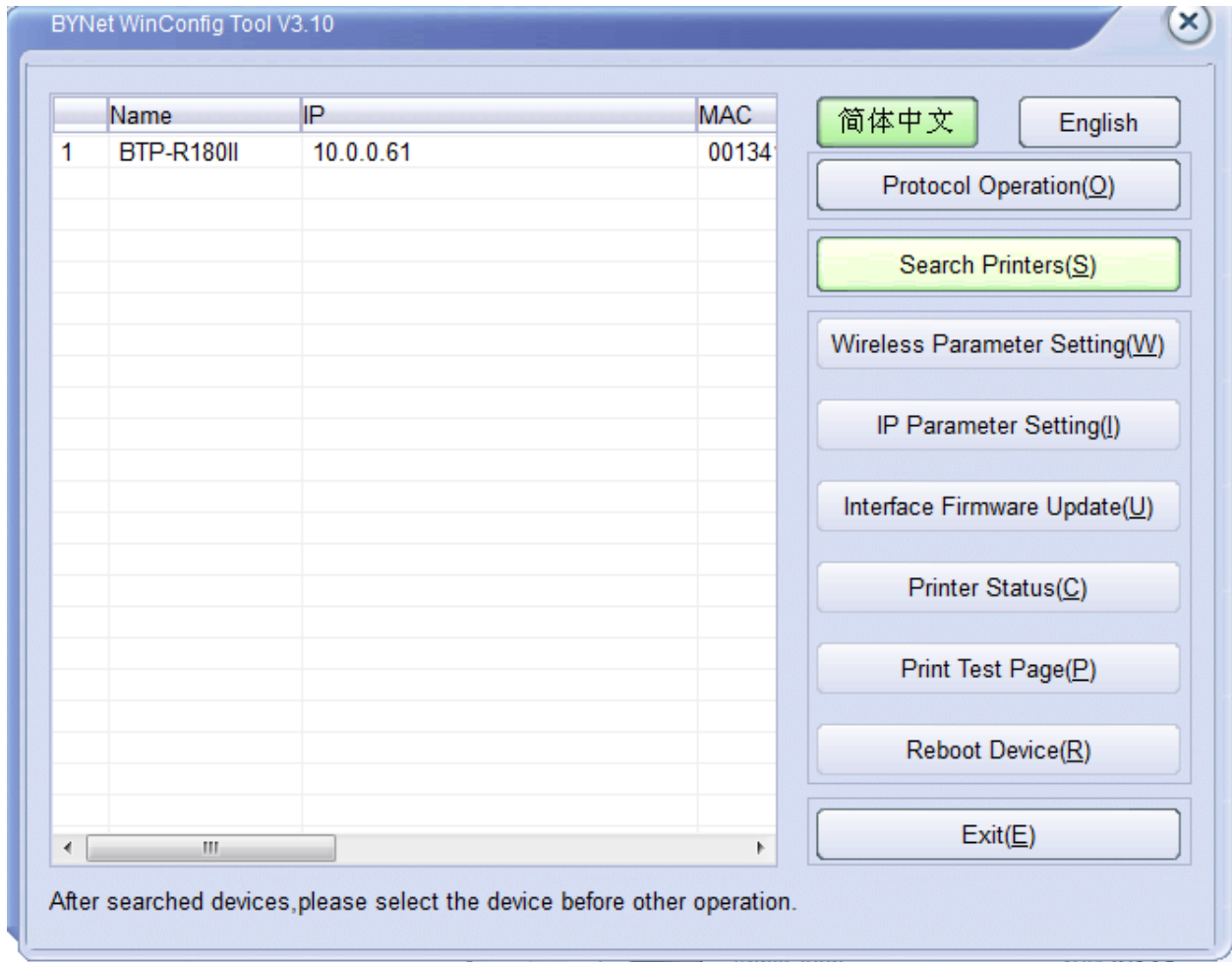
8. Make sure that Dynamic IP Address(DHCP) is selected then click ok



9. Now click Reboot Device

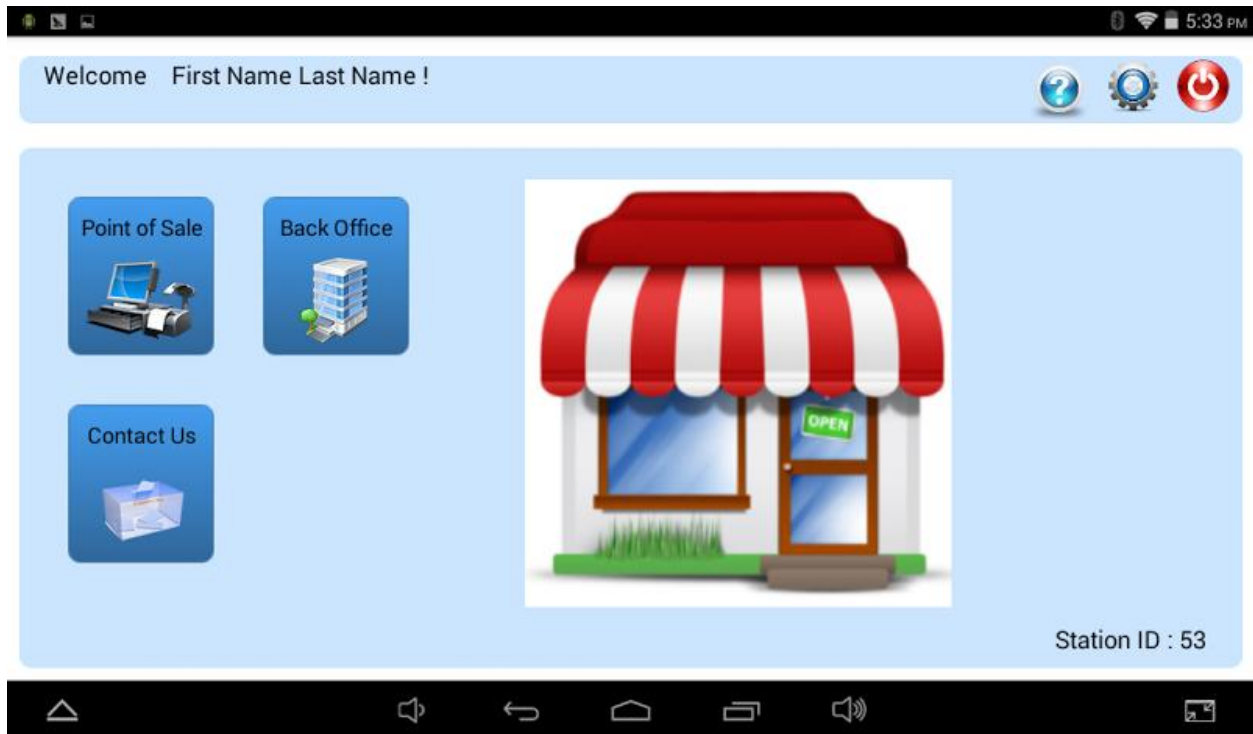


10. After printer feeds paper, click Search Printers again.

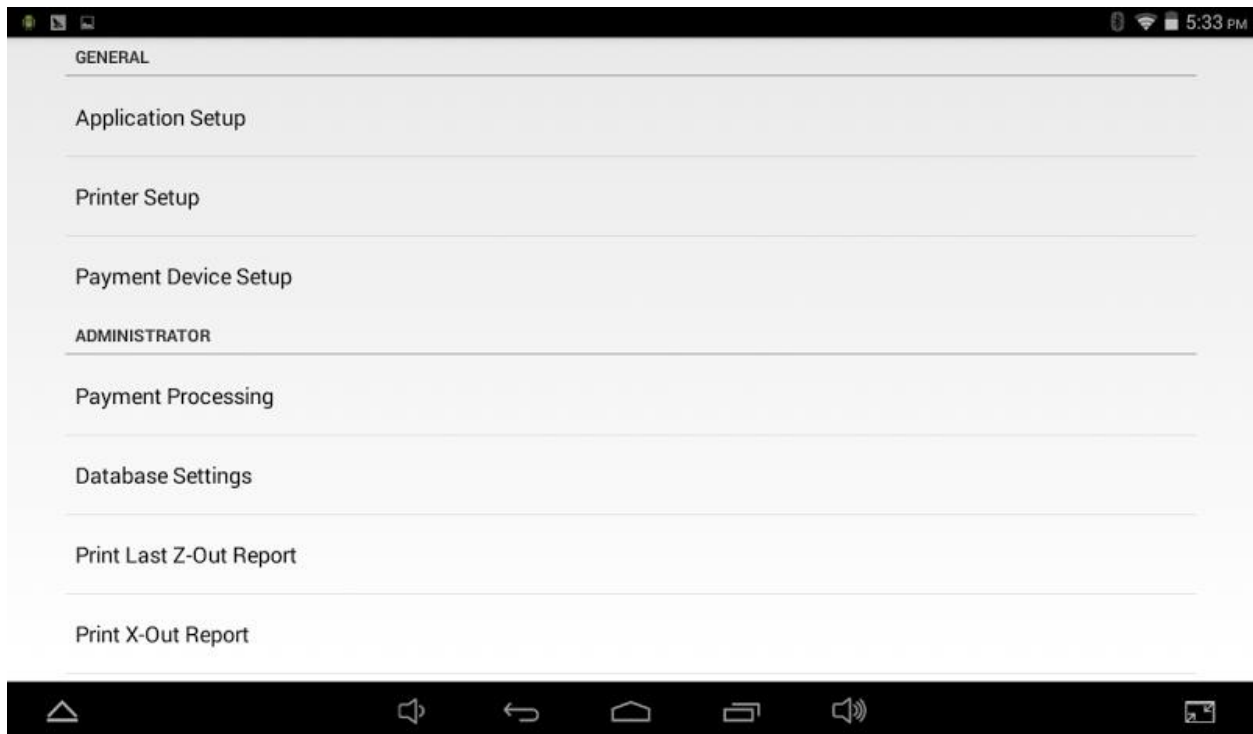


**TAKE NOTE OF THE IP ADDRESS TO INPUT INTO SMART360 POS
IT SHOULD NOW MATCH YOUR NETWORK**

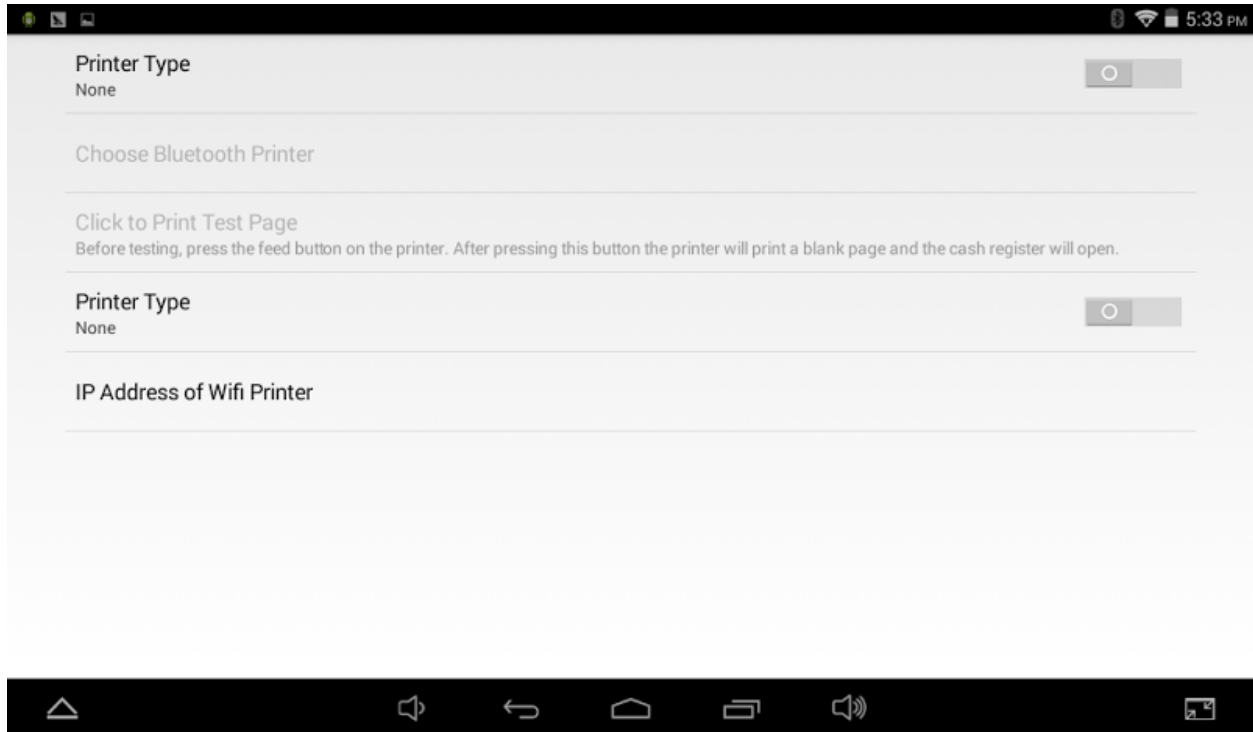
11. Click settings button on upper right (assuming you are now logged on)



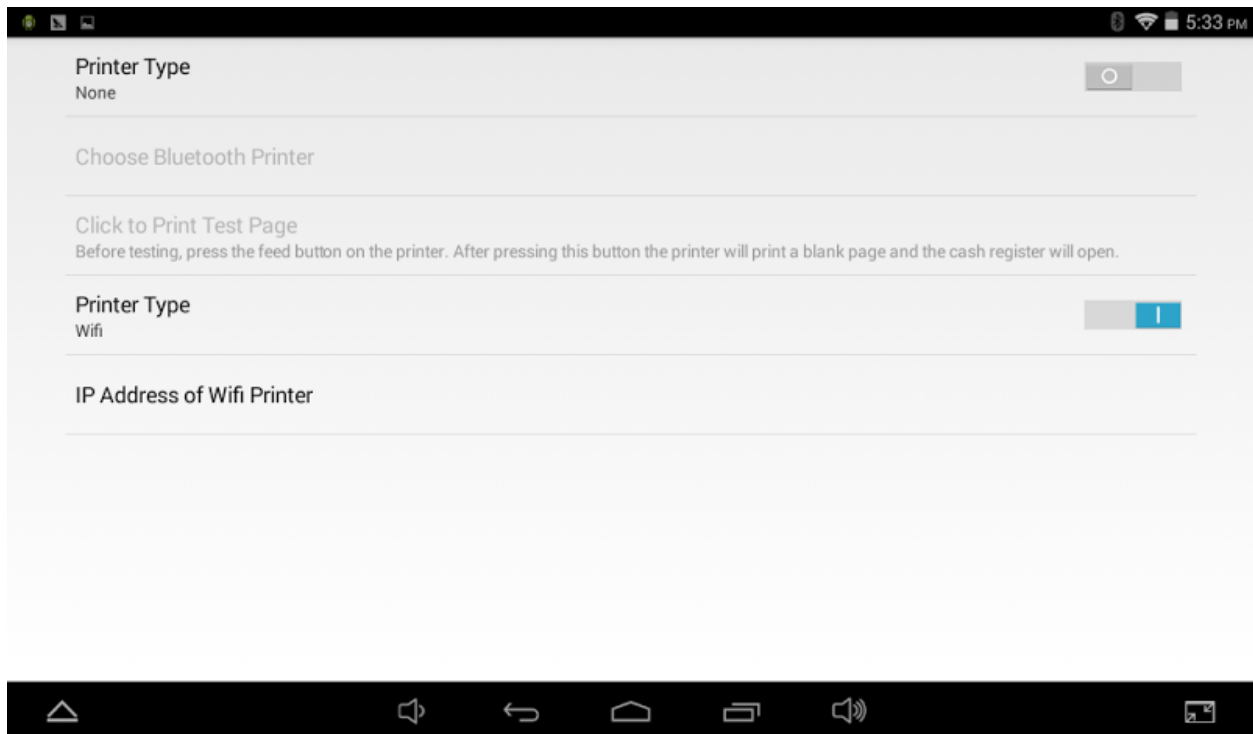
12. Now click Printer Setup



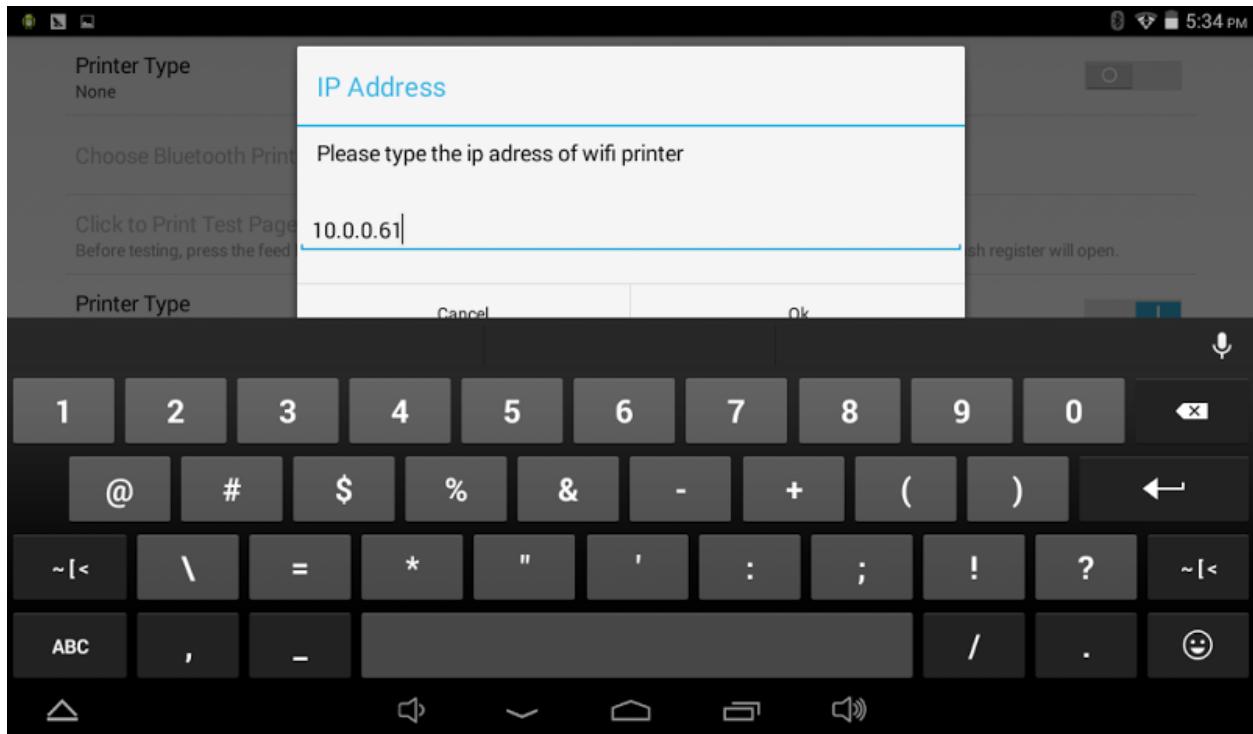
13. Now click on Printer Type to flip the switch to on



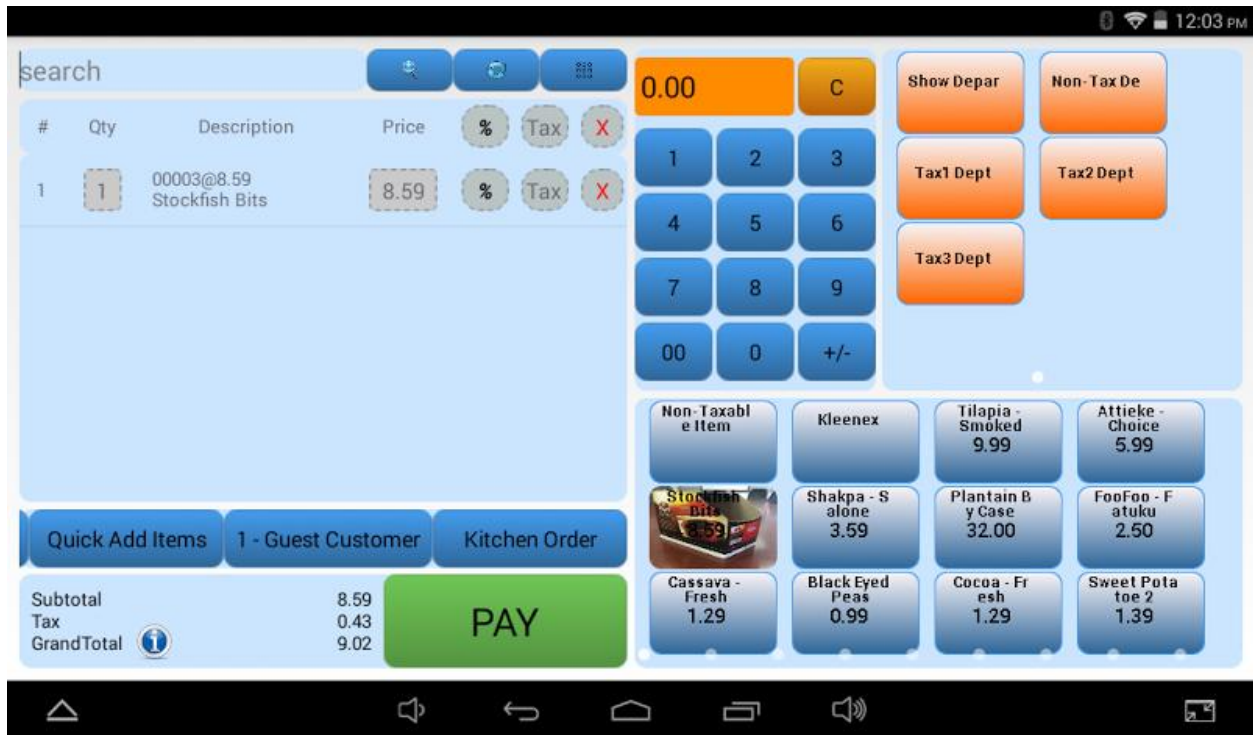
14. Now click on IP Address of Wifi Printer



15. Now input the IP Address you took note of earlier and then click OK



16. On the point of sale side, when you ring an item up, scroll to the right where it has the Open Drawer button and click Kitchen Order.



17. After clicking Kitchen Order button, you will have the option to input a note, such as a customer requirement. Once you click OK it will print a note at your BTP-R180II.

